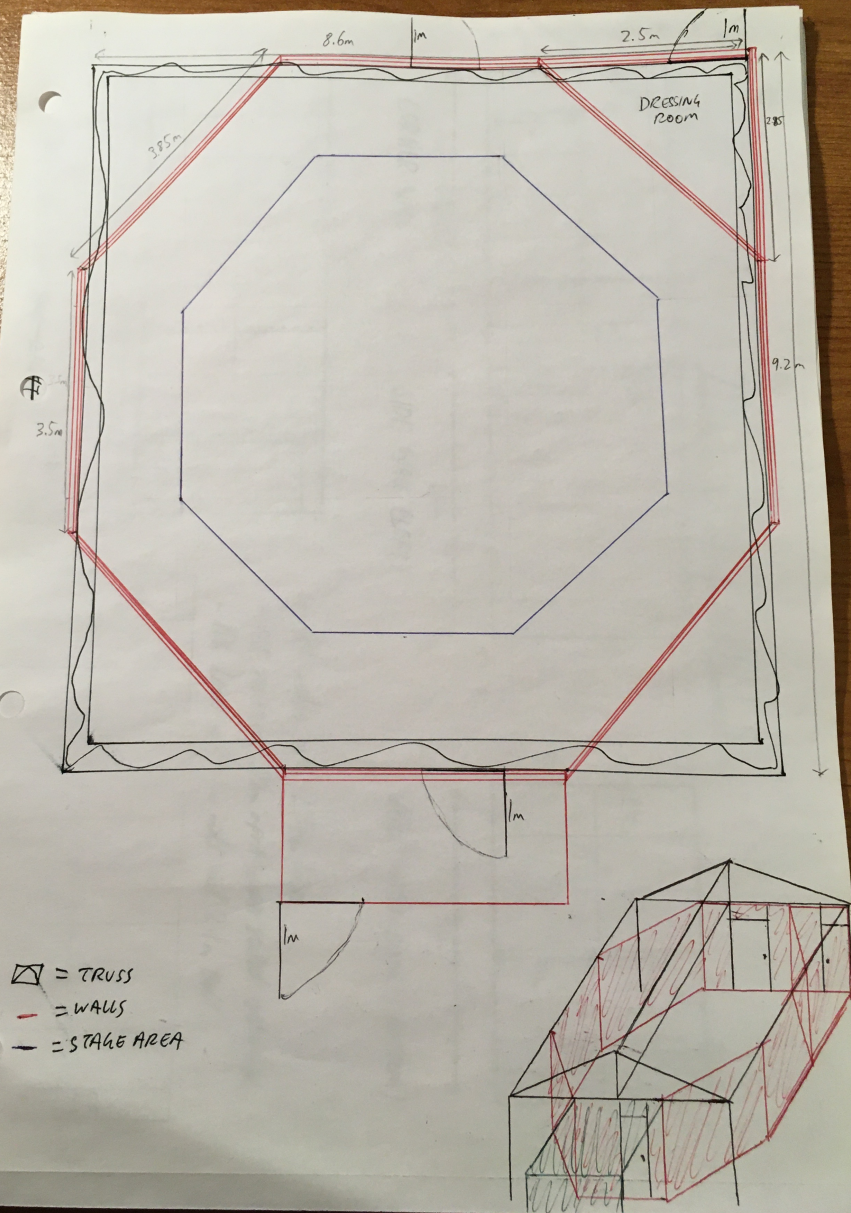


The Greenhouse @ Canary Wharf

Design Presentation (2021)



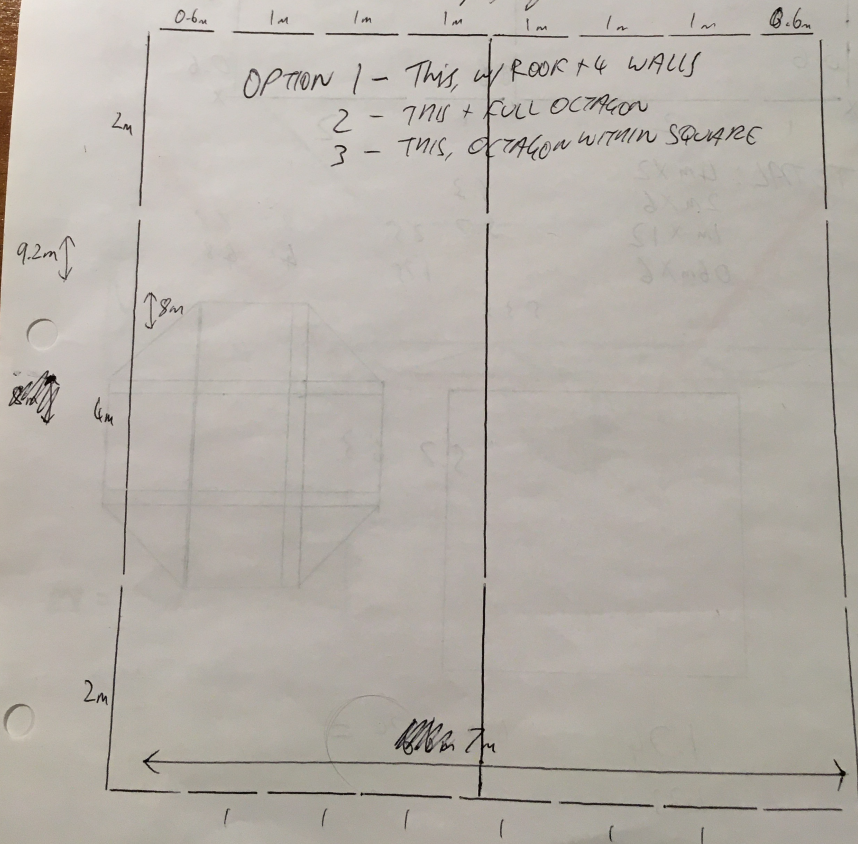
20 20 - LEGS : ~~20x20cm~~ ~~10x20cm~~

1: 10x 20cm	= 2m	0.2m x 32	0.6m x 7
2: 10x 20cm	= 2m	0.6m x 8	1m x 13
3: 10x 20cm	= 2m	0.8m x 1	2m x 6
4: 0.6m, 0.6m, 0.6m = 2m			4m x 3
5: 0.6m x 3, 20cm x 1 = 2m			
6: 0.6m x 3, 20cm x 1 = 2m			

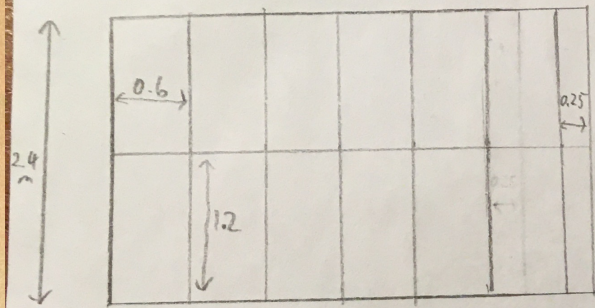
→ LEFT

EACH SIDE HAS 2 OR 3 JOINTS
EXT LENGTH OF LENGTH WILL ALWAYS BE ON EXTRA 1.2m
WIDTH 1.6m

SO BASICALLY... need 3 lengths of 8m
2 lengths of 6.6m

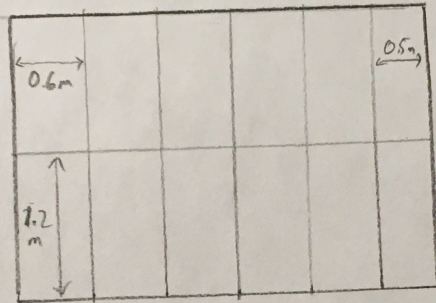


2021 VENUE WALLS



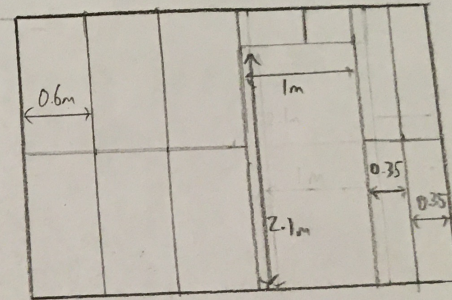
3.85-3.85m

CORNER WALL



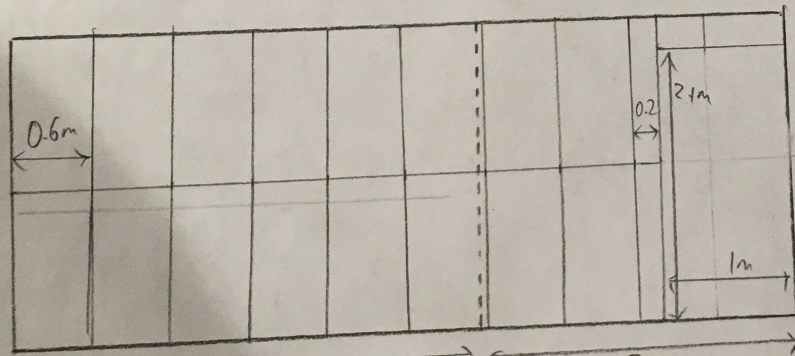
3.5m

SIDE WALL (LEFT)



3.5m

WALL WITH DOOR (BOTTOM)



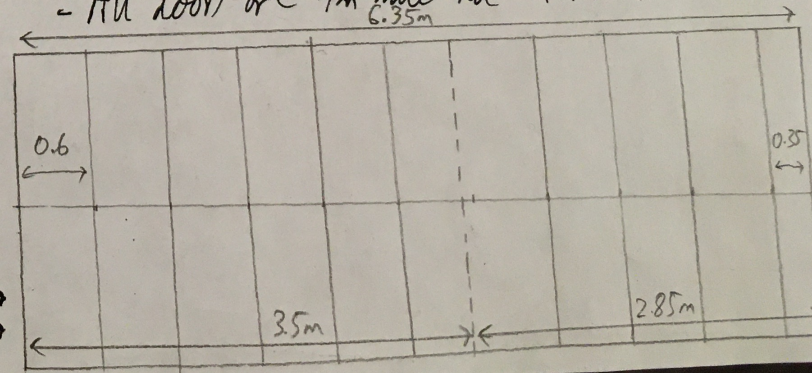
3.5m 2.5m

6m

LONG WALL (TOP) AND RIGHT

LONG WALL (RIGHT)

- All walls are 2.4m high
- All studs are 60mm apart, unless stated otherwise.
- All doors are 1m wide and 2.1m tall.

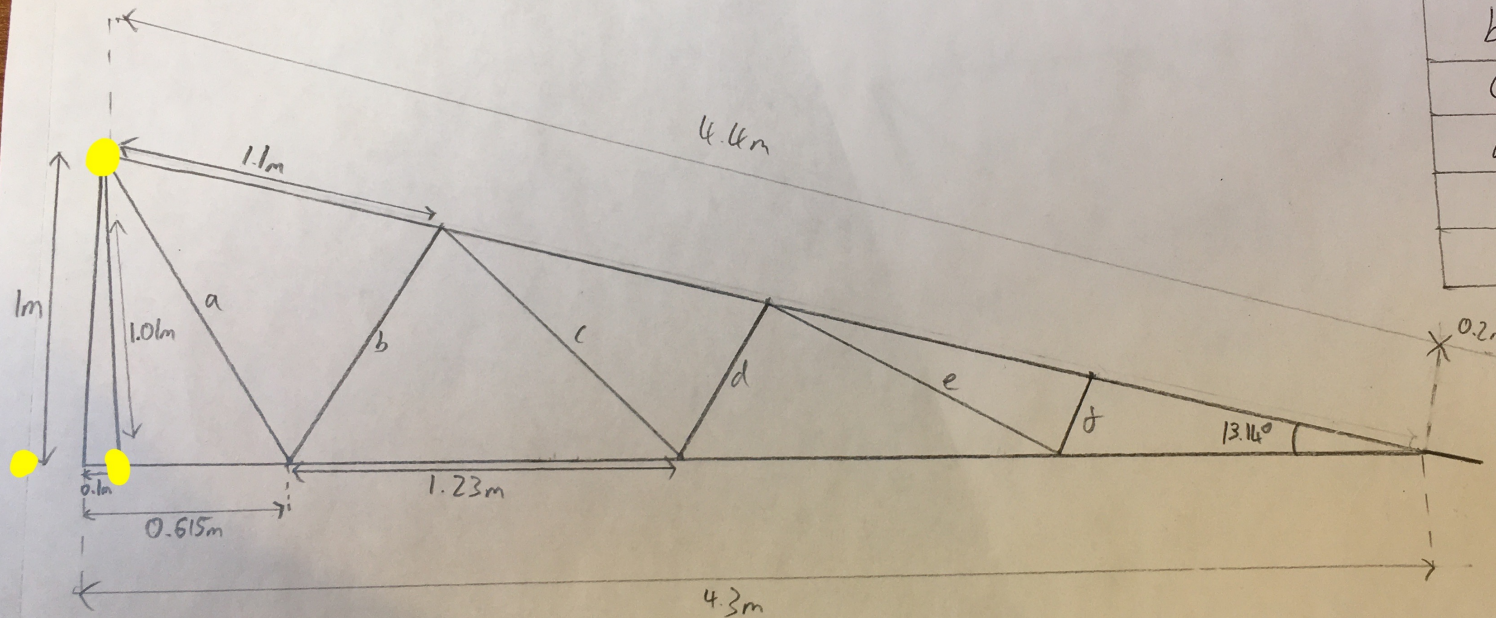


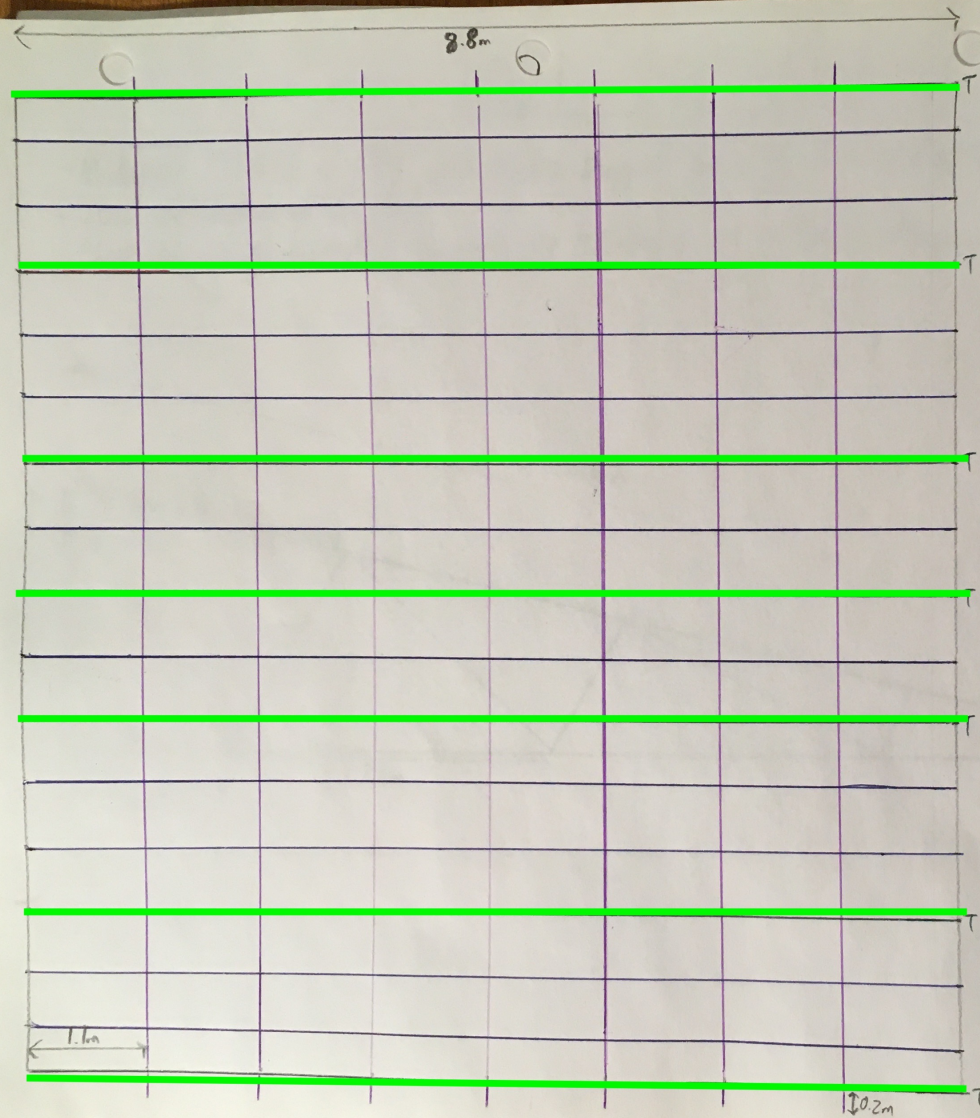
6.35m

2021 ROOF TRUSS

- Modified TRIPLE FINK with extra support at peak to attach roof to metal trussing.
- 20cm overhang at the end.
- Chose this design because it supports the installation of plastic roofing material.

SIDE	LENGTH
a	1.17
b	0.89
c	1.06
d	0.59
e	1.04
f	0.3





KEY

- ROOF TRUSS
- BEAM
- CROSS BEAM

2021 ROOF TRUSS

- Diagram shows cross view of roof, with 20cm overhang on all sides.
- regularity of truss and beam bay again been chosen to allow installation of plastic roofing.

9.2m

1.6m